

**EME**

**v roce**

**2009**

50 MHz

OK1RD

[www.ok1rd.com](http://www.ok1rd.com)



# 144 MHz

- OK1UGA <http://ok1uga.nagano.cz>
- OK1CU
- OK1TEH [www.qsl.net/ok1teh](http://www.qsl.net/ok1teh)
- OK1MDK
- OK2PWY
- OK3VM
- OK1MS
- OK1VVP
- OK7FA
- OK1IA

# 432 MHz

- OK1YK
- OK1TEH
- OK2POI [www.ok2kjt.net/ok2poi](http://www.ok2kjt.net/ok2poi)

1296 MHz

OK3RM [www.ok3rm.cz](http://www.ok3rm.cz)

OK2DL <http://ok2dl.blogspot.com>

OK2KJT [www.ok2kjt.net](http://www.ok2kjt.net)

# 1296 MHz ve výstavbě OK1YK



# 1296 MHz ve výstavbě OK1KKD



# 1296 MHz ve výstavbě OK2ULQ

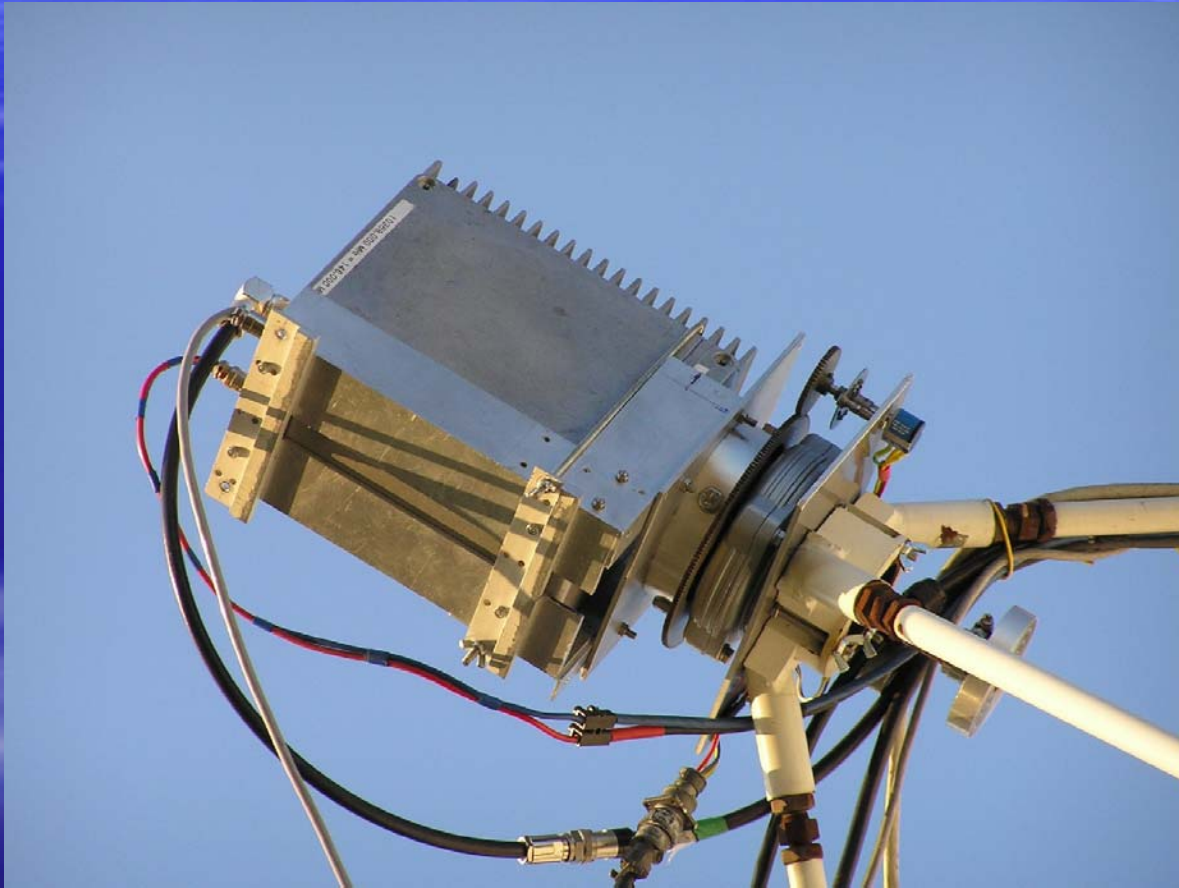


# OK1DFC

[www.ok1dfc.com](http://www.ok1dfc.com)



# OK1CA

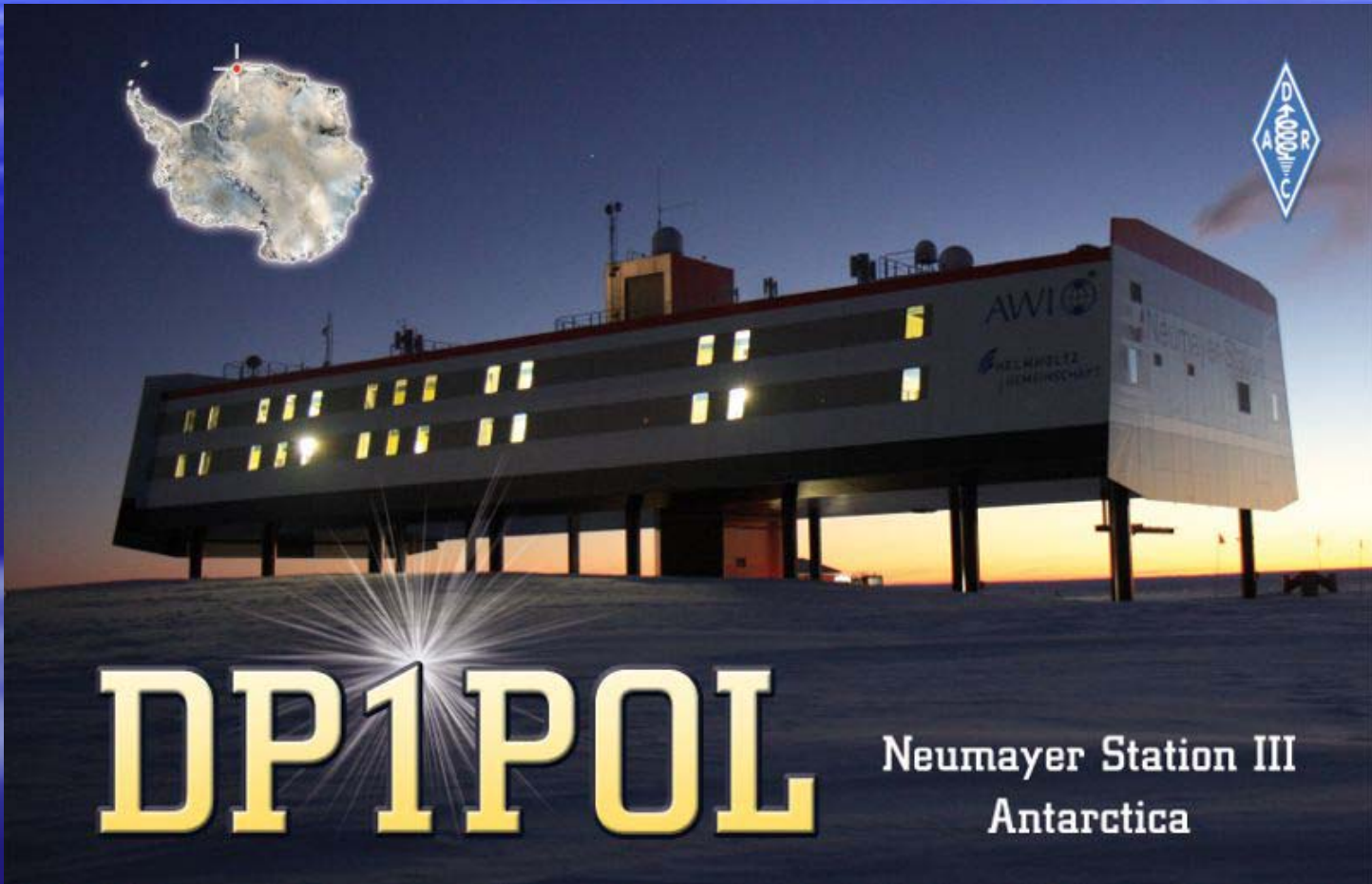


# OK1KIR

[www.ok1kir.cz](http://www.ok1kir.cz)



# EXPEDICE



**DP1POL**

Neumayer Station III  
Antarctica

# Expedice

The world's first five-band EME DXpedition

# MI/DL1YMK

2 m/70/23/13/9 cm

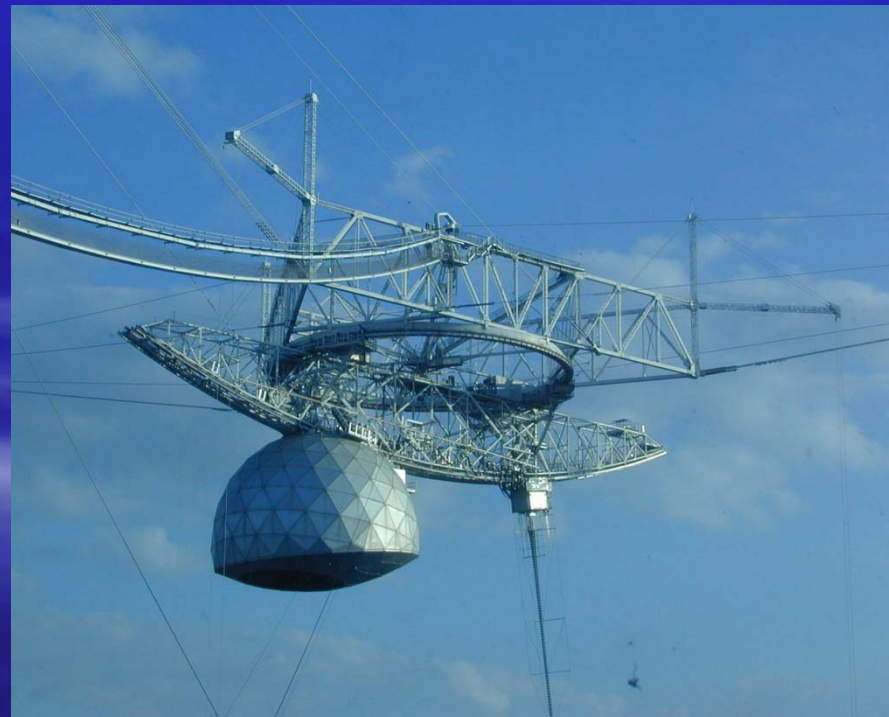
Northern Ireland, May 2009

Grid IO74du



# KP4AO

National Observatory and Ionosphere Center  
Arecibo Observatory – Puerto Rico  
[www.naic.edu](http://www.naic.edu)



# KP4AO

- TX kmitočet 432,045 MHz
- RX kmitočet 432,050 – 432,060 +
- TX výkon 400 W
- Zisk antény 60dBi

		Azimut	Elevace
■	16.dubna 16,45 - 19,30 UT	262° - 293°	35° - 10°
■	17.dubna 17,40 – 20,20 UT	265° - 293°	36° - 12°
■	18.dubna 18,40 – 21,25 UT	266° - 294°	36° - 12°